



accla:works

head office tel: 868 626 2837 fax: 868 626 3643  
fernandes business centre hq002 eastern main road  
laventille pos trinidad+tobago www.aclaworks.com

# Cascade Reconstitution Apartments

Cascade Road, Cascade, St. George, Trinidad and Tobago



for approval

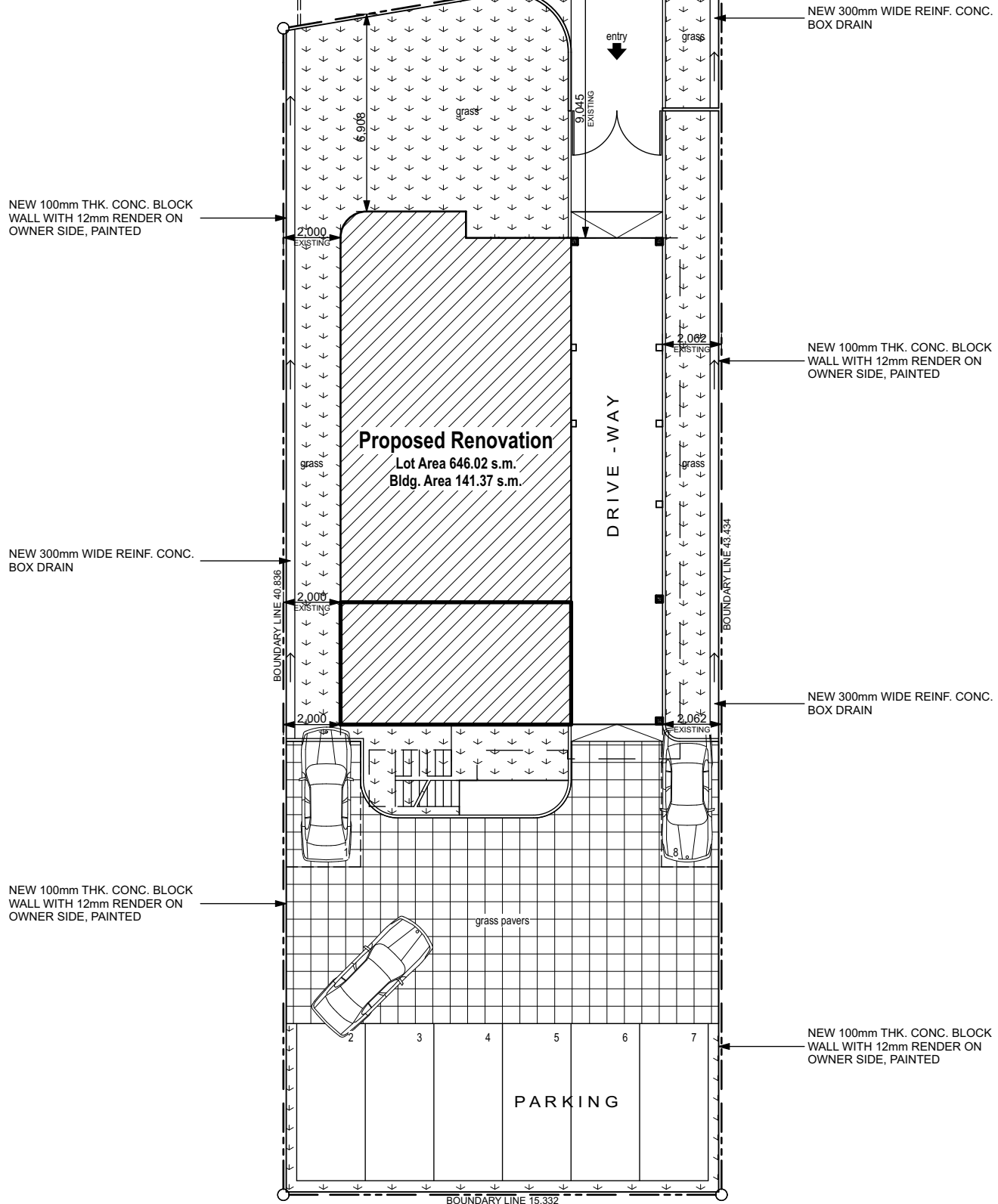
Wednesday, May 10, 2017

## architecture + interiors

directors: brian lewis gary turton junior thompson peter chandler mandilee newton associates: felix pfister brent matthew  
head office tel: 868 626 2837 fax: 868 626 3634 unit 102 hq fernandes business centre laventille trinidad + tobago  
barbados tel: 246 430 8400 fax: 246 429 6446 worthington corporate centre worthing p.o. box 169w bb 15008 www.aclaworks.com

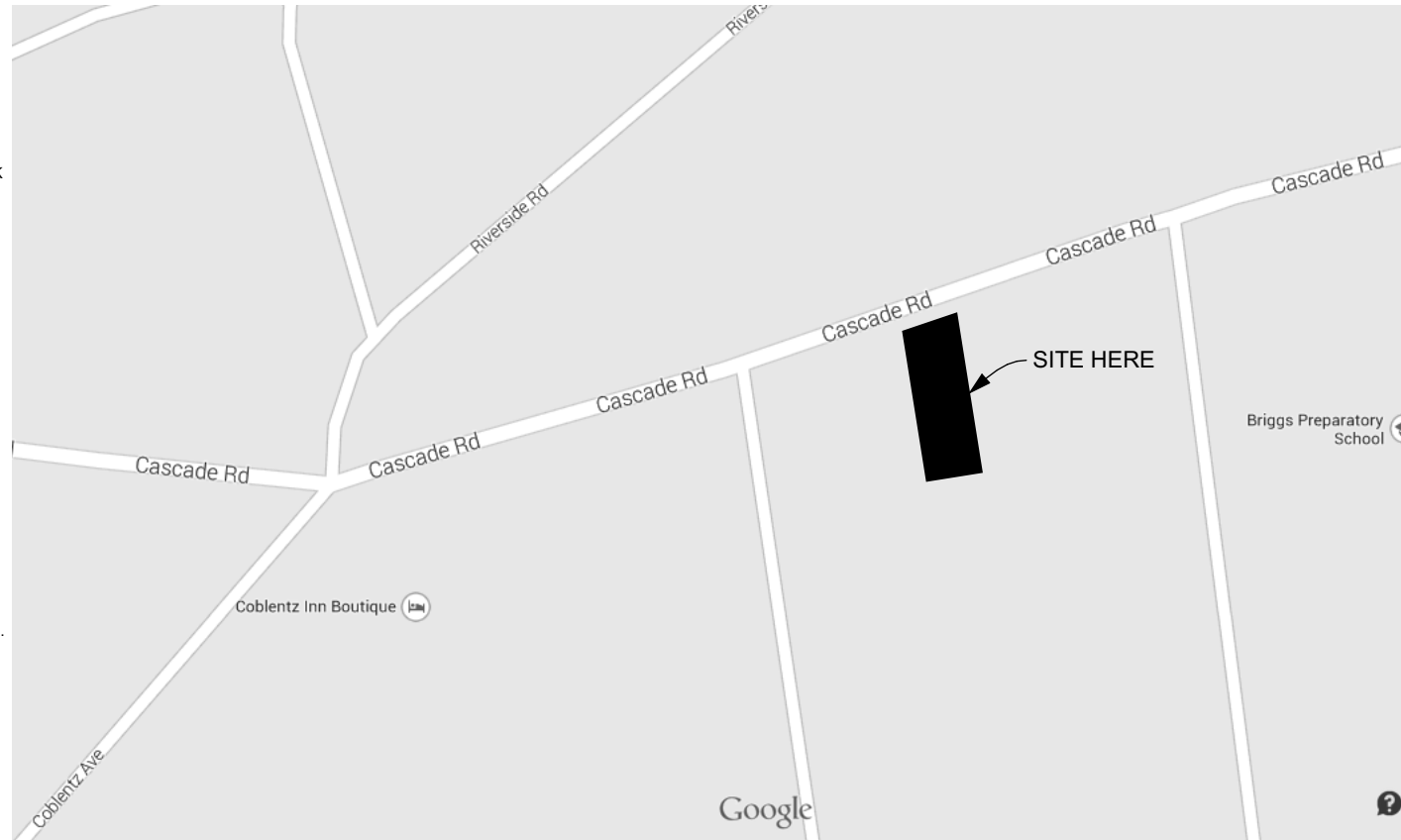


Cascade Road



**site plan**

SCALE: 1:200



**Location Map**

NOT TO SCALE

- General notes
1. COMPLY WITH TOWN AND COUNTRY AS WELL AS REGIONAL CORPORATION CODES, RULES AND REGULATIONS GOVERNING THE WORK.
  2. REVIEW DOCUMENTS, VERIFY DIMENSIONS AND FIELD CONDITIONS AND CONFIRM THAT WORK IS BUILDABLE AS SHOWN. REPORT ANY CONFLICTS OR OMISSIONS TO THE ARCHITECT FOR CLARIFICATION PRIOR TO PERFORMING ANY WORK IN QUESTION.
  3. SUBMIT REQUEST FOR SUBMISSIONS, REVISIONS OR CHANGES TO ARCHITECT FOR REVIEW PRIOR TO PURCHASE, FABRICATION OR INSTALLATION.
  4. COORDINATE WORK WITH THE OWNER, INCLUDING SCHEDULING TIME AND LOCATIONS FOR DELIVERIES, BUILDING ACCESS, USE OF BUILDING SERVICES AND FACILITIES, AND USE OF ELEVATORS. MINIMIZE DISTURBANCE OF BUILDING FUNCTIONS AND OCCUPANTS.
  5. OWNER WILL PROVIDE WORK NOTED "BY OTHERS" OR "NIC" UNDER SEPARATE CONTRACT. INCLUDE SCHEDULE REQUIREMENTS IN CONSTRUCTION PROGRESS SCHEDULE AND COORDINATE TO ASSURE ORDERLY SEQUENCE OF INSTALLATION.
  7. PROTECT AREA OF WORK AND ADJACENT AREAS FROM DAMAGE.
  8. MAINTAIN WORK AREAS SECURE AND LOCKABLE DURING CONSTRUCTION. COORDINATE WITH TENANT AND LANDLORD TO ENSURE SECURITY.
  9. DO NOT SCALE DRAWINGS. WRITTEN DIMENSIONS GOVERN.
  10. UNDERCUT DOORS TO CLEAR TOP OF FLOOR FINISHES BY 6mm (X), UNLESS OTHERWISE NOTED.

Revision			
No.	Date	Description	By

Quantity Surveyor
Structural Consultant
Mechanical & Electrical Consultant

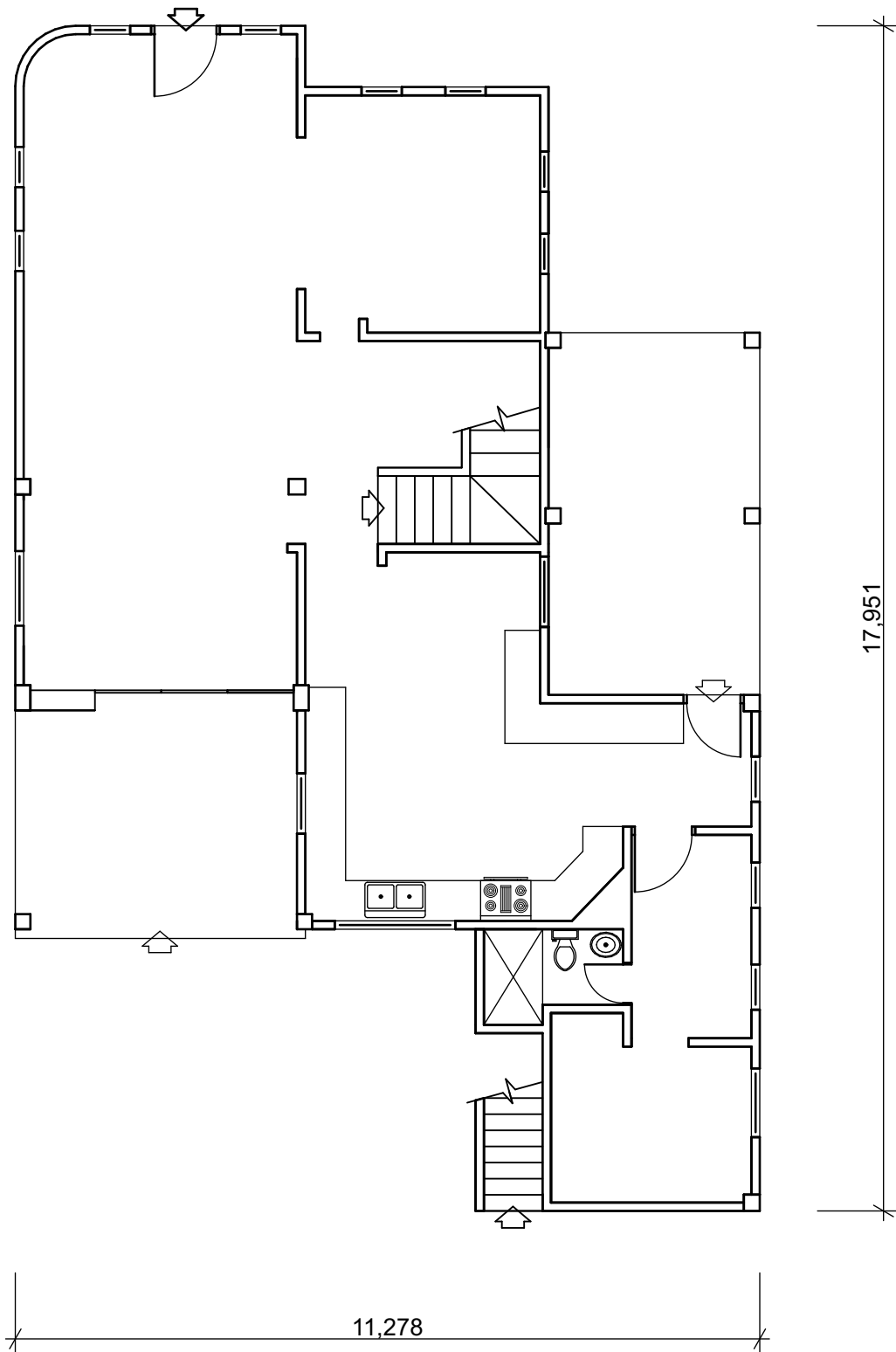
Architect

architecture+interiors  
 head office tel: 868 626 2837 fax: 868 626 3643  
 fernandes business centre hq02 eastern main road  
 laventille pos trinidad+tbago www.aclaworks.com

**for approval**  
 Friday, May 12, 2017

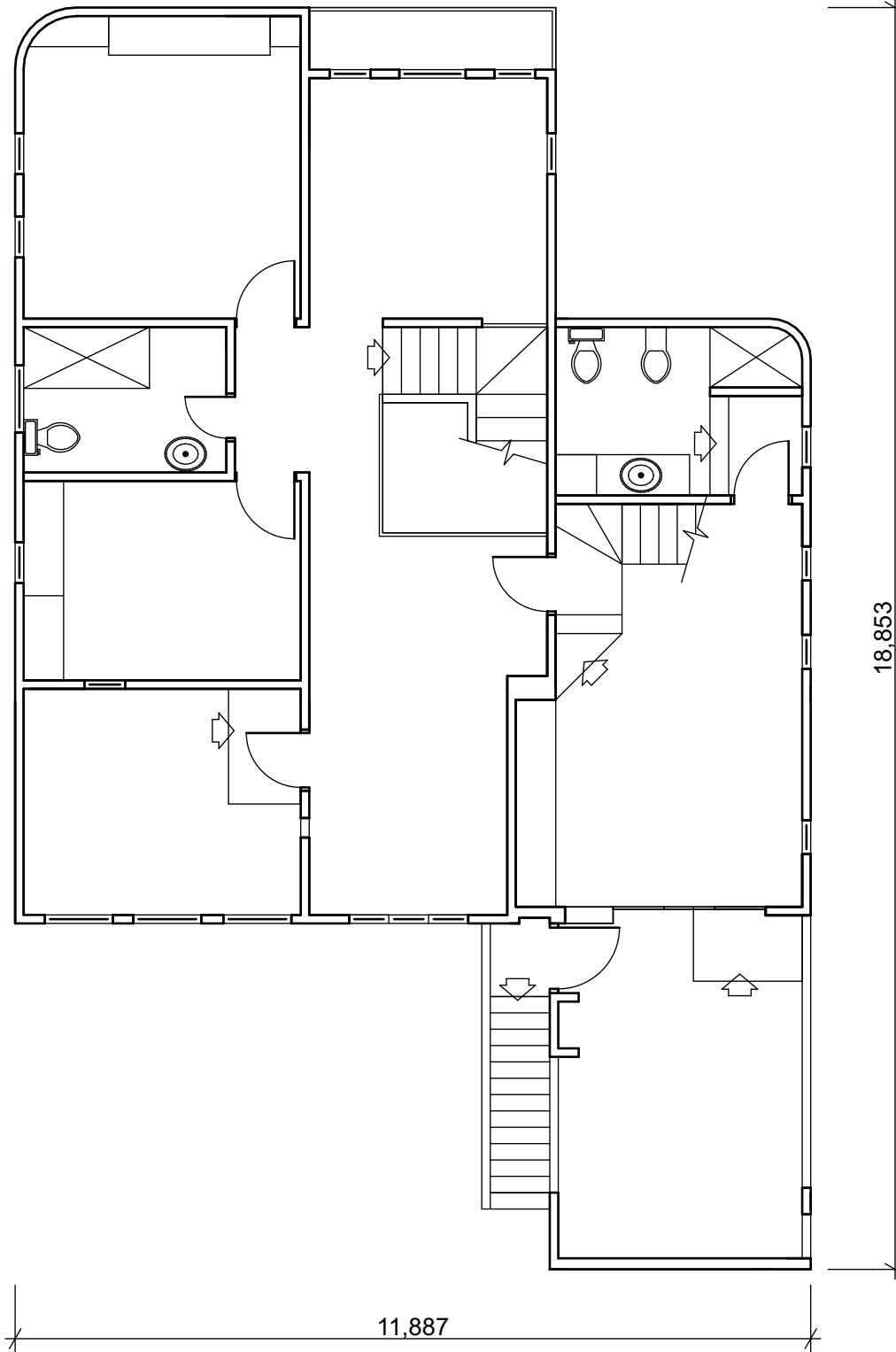
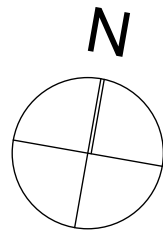
Project Title	<b>Cascade Reconstitution Apartments</b>
Cascade Road Cascade	#Site City
Trinidad and Tobago	Drawing Title
<b>site plan &amp; location map</b>	

Scale	<b>1:200</b>
First Issue Date	<b>09 July, 2014</b>
Project number	<b>2014-0005</b>
Modelled by	<b>J. Juman</b>
drawing number	<b>A:G/100</b>
revision	



# ground floor

SCALE: 1:100



# first floor

SCALE: 1:100

- General notes**
1. COMPLY WITH TOWN AND COUNTRY AS WELL AS REGIONAL CORPORATION CODES, RULES AND REGULATIONS GOVERNING THE WORK.
  2. REVIEW DOCUMENTS, VERIFY DIMENSIONS AND FIELD CONDITIONS AND CONFIRM THAT WORK IS BUILDABLE AS SHOWN. REPORT ANY CONFLICTS OR OMISSIONS TO THE ARCHITECT FOR CLARIFICATION PRIOR TO PERFORMING ANY WORK IN QUESTION.
  3. SUBMIT REQUEST FOR SUBMISSIONS, REVISIONS OR CHANGES TO ARCHITECT FOR REVIEW PRIOR TO PURCHASE, FABRICATION OR INSTALLATION.
  4. COORDINATE WORK WITH THE OWNER, INCLUDING SCHEDULING TIME AND LOCATIONS FOR DELIVERIES, BUILDING ACCESS, USE OF BUILDING SERVICES AND FACILITIES, AND USE OF ELEVATORS. MINIMIZE DISTURBANCE OF BUILDING FUNCTIONS AND OCCUPANTS.
  5. OWNER WILL PROVIDE WORK NOTED "BY OTHERS" OR "NIC" UNDER SEPARATE CONTRACT. INCLUDE SCHEDULE REQUIREMENTS IN CONSTRUCTION PROGRESS SCHEDULE AND COORDINATE TO ASSURE ORDERLY SEQUENCE OF INSTALLATION.
  7. PROTECT AREA OF WORK AND ADJACENT AREAS FROM DAMAGE.
  8. MAINTAIN WORK AREAS SECURE AND LOCKABLE DURING CONSTRUCTION. COORDINATE WITH TENNANT AND LANDLORD TO ENSURE SECURITY.
  9. DO NOT SCALE DRAWINGS. WRITTEN DIMENSIONS GOVERN.
  10. UNDERCUT DOORS TO CLEAR TOP OF FLOOR FINISHES BY 6mm (1/4"), UNLESS OTHERWISE NOTED.

Revision			
No.	Date	Description	By

Quantity Surveyor

Structural Consultant

Mechanical & Electrical Consultant

Architect

acla.works

architecture+interiors  
 head office tel: 868 626 2837 fax: 868 626 3643  
 fernandes business centre hq002 eastern main road  
 laventille pos trinidad+tbago www.aclaworks.com

**for approval**  
 Friday, May 12, 2017

Project Title

**Cascade Reconstitution Apartments**

Cascade Road Cascade  
 #Site City  
 Trinidad and Tobago

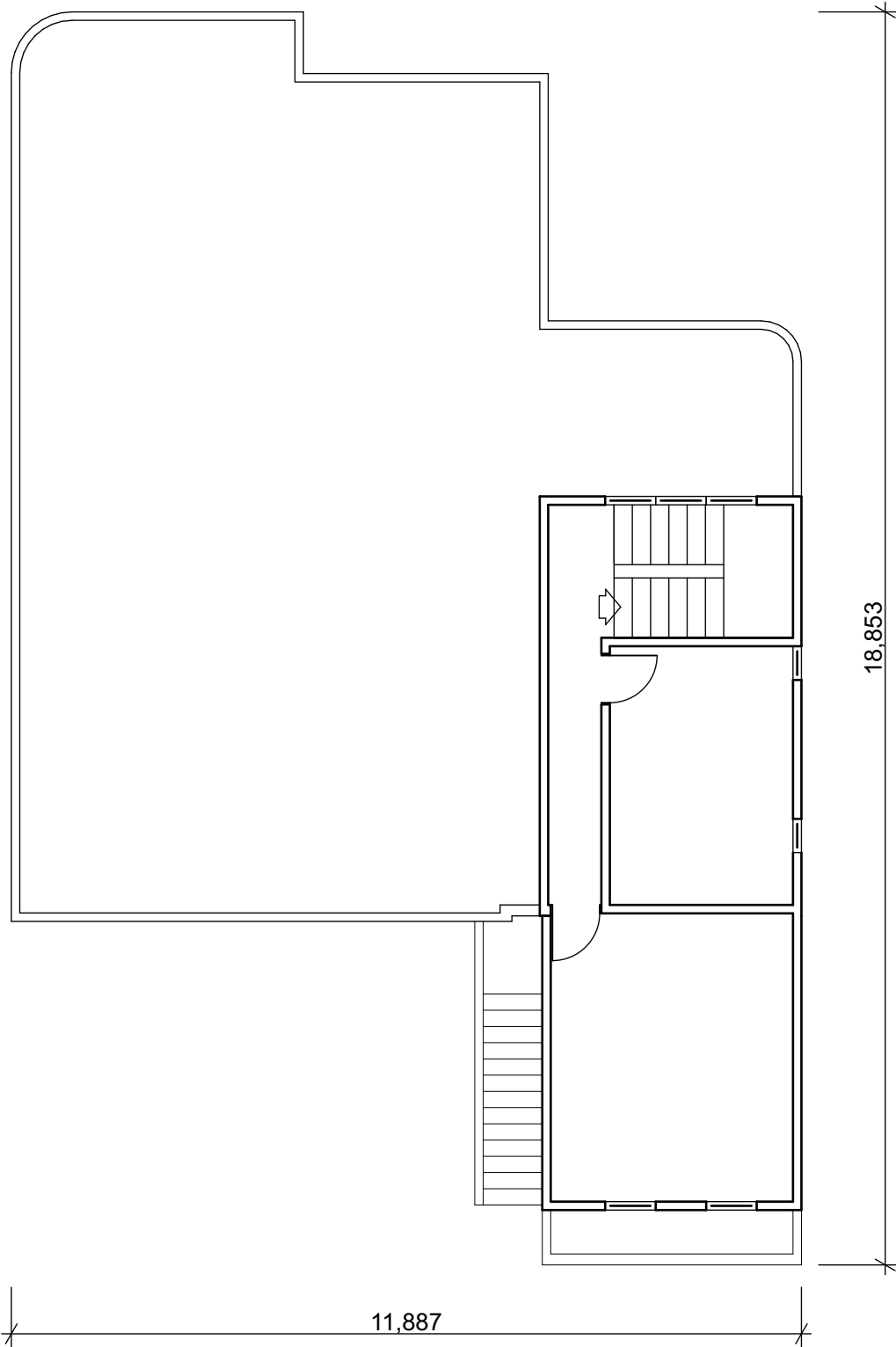
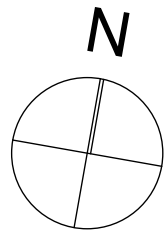
Drawing Title

**existing ground & first floor plans**

Scale	1:100
First Issue Date	23 July, 2014
Project number	2014-0005
Modelled by	J. Juman

drawing number **A:G/101** revision





**second floor**

SCALE: 1:100

- General notes**
1. COMPLY WITH TOWN AND COUNTRY AS WELL AS REGIONAL CORPORATION CODES, RULES AND REGULATIONS GOVERNING THE WORK.
  2. REVIEW DOCUMENTS, VERIFY DIMENSIONS AND FIELD CONDITIONS AND CONFIRM THAT WORK IS BUILDABLE AS SHOWN. REPORT ANY CONFLICTS OR OMISSIONS TO THE ARCHITECT FOR CLARIFICATION PRIOR TO PERFORMING ANY WORK IN QUESTION.
  3. SUBMIT REQUEST FOR SUBMISSIONS, REVISIONS OR CHANGES TO ARCHITECT FOR REVIEW PRIOR TO PURCHASE, FABRICATION OR INSTALLATION.
  4. COORDINATE WORK WITH THE OWNER, INCLUDING SCHEDULING TIME AND LOCATIONS FOR DELIVERIES, BUILDING ACCESS, USE OF BUILDING SERVICES AND FACILITIES, AND USE OF ELEVATORS. MINIMIZE DISTURBANCE OF BUILDING FUNCTIONS AND OCCUPANTS.
  5. OWNER WILL PROVIDE WORK NOTED 'BY OTHERS' OR 'NIC' UNDER SEPARATE CONTRACT. INCLUDE SCHEDULE REQUIREMENTS IN CONSTRUCTION PROGRESS SCHEDULE AND COORDINATE TO ASSURE ORDERLY SEQUENCE OF INSTALLATION.
  7. PROTECT AREA OF WORK AND ADJACENT AREAS FROM DAMAGE.
  8. MAINTAIN WORK AREAS SECURE AND LOCKABLE DURING CONSTRUCTION. COORDINATE WITH TENNANT AND LANDLORD TO ENSURE SECURITY.
  9. DO NOT SCALE DRAWINGS. WRITTEN DIMENSIONS GOVERN.
  10. UNDERCUT DOORS TO CLEAR TOP OF FLOOR FINISHES BY 6mm (1/8"), UNLESS OTHERWISE NOTED.

Revision			
No.	Date	Description	By

Quantity Surveyor

Structural Consultant

Mechanical & Electrical Consultant

Architect

acla.works

architecture+interiors  
 head office tel: 868 626 2837 fax: 868 626 3643  
 fernandes business centre hq02 eastern main road  
 laventille pos trinidad+bbago www.aclaworks.com

**for approval**  
 Friday, May 12, 2017

Project Title

**Cascade Reconstitution Apartments**

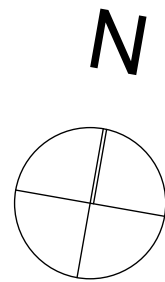
Cascade Road Cascade  
 #Site City  
 Trinidad and Tobago

Drawing Title

**existing second floor plan**

Scale	1:100
First Issue Date	09 July, 2014
Project number	2014-0005
Modelled by	J. Juman

drawing number	<b>A:G/102</b>	revision	
----------------	----------------	----------	--



A-A  
A:G/300

B-B  
A:G/300

B-B  
A:G/300

A-A  
A:G/300

# ground floor plan

SCALE: 1:100

NEW METAL FRAMED FIXED WINDOW WITH GLASS AND SAFETY FILM

EXISTING BLOCK WALL, RE-PAINTED

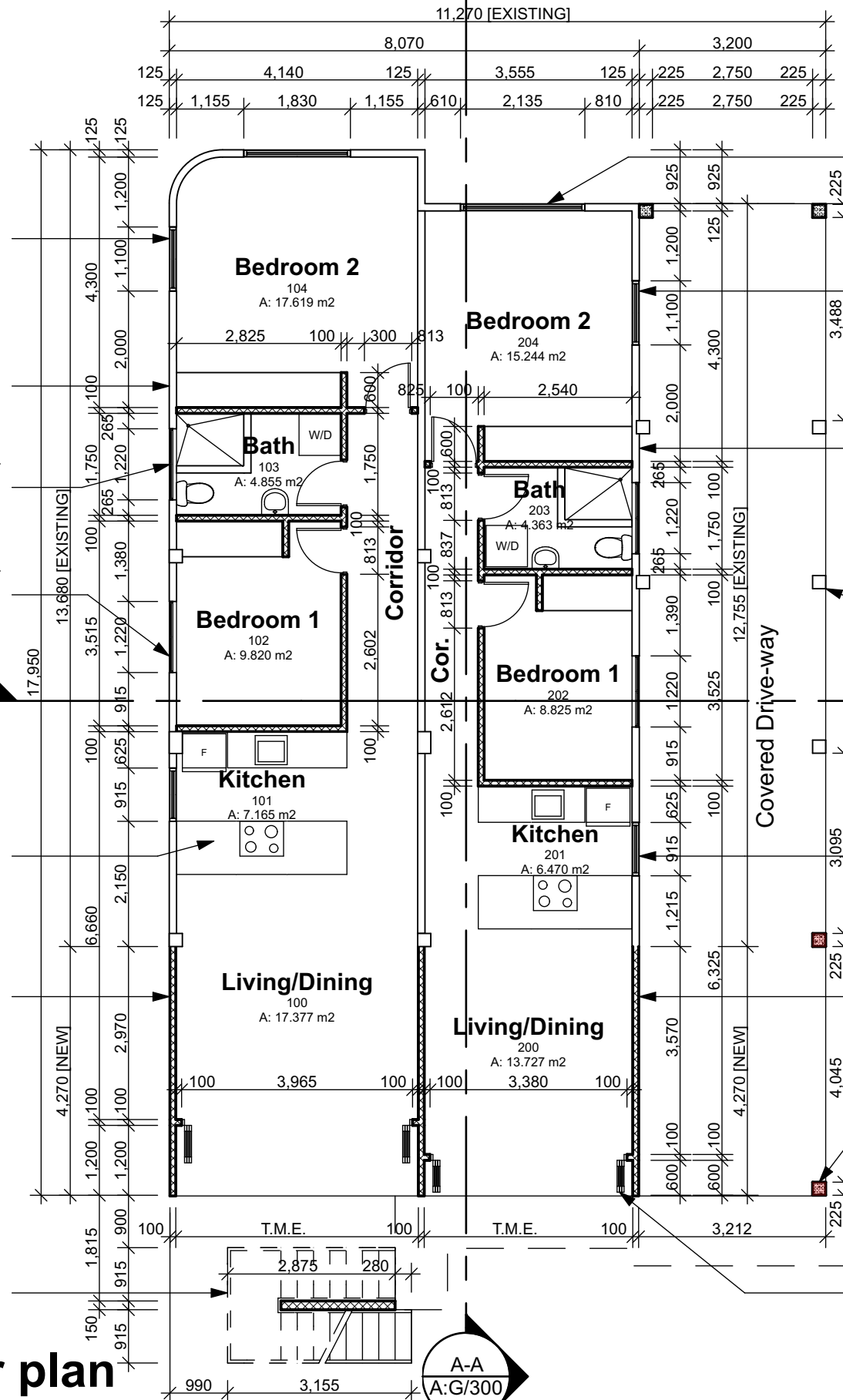
NEW METAL FRAMED CASEMENT WINDOWS WITH GLASS AND SAFETY FILM

NEW METAL FRAMED CASEMENT WINDOWS WITH GLASS AND SAFETY FILM

NEW KITCHEN COUNTER WITH CABINETS BELOW

NEW 100mm THK. CONC. BLOCK WALL WITH 12mm RENDER ON BOTH SIDES, PAINTED

NEW REINFORCED CONCRETE STAIRS WITH METAL HANDRAIL



NEW METAL FRAMED FIXED WINDOW WITH GLASS AND SAFETY FILM

NEW METAL FRAMED FIXED WINDOW WITH GLASS AND SAFETY FILM

EXISTING BLOCK WALL, RE-PAINTED

EXISTING REINF. CONC. COLUMN, RE-PAINTED

NEW METAL FRAMED FIXED WINDOW WITH GLASS AND SAFETY FILM

NEW 100mm THK. CONC. BLOCK WALL WITH 12mm RENDER ON BOTH SIDES, PAINTED

NEW REINF. CONC. COLUMN WITH 12mm RENDER, PAINTED

NEW METAL BI-FOLDING DOORS WITH GLASS AND SAFETY FILM

- General notes**
1. COMPLY WITH TOWN AND COUNTRY AS WELL AS REGIONAL CORPORATION CODES, RULES AND REGULATIONS GOVERNING THE WORK.
  2. REVIEW DOCUMENTS, VERIFY DIMENSIONS AND FIELD CONDITIONS AND CONFIRM THAT WORK IS BUILDABLE AS SHOWN. REPORT ANY CONFLICTS OR OMISSIONS TO THE ARCHITECT FOR CLARIFICATION PRIOR TO PERFORMING ANY WORK IN QUESTION.
  3. SUBMIT REQUEST FOR SUBMISSIONS, REVISIONS OR CHANGES TO ARCHITECT FOR REVIEW PRIOR TO PURCHASE, FABRICATION OR INSTALLATION.
  4. COORDINATE WORK WITH THE OWNER, INCLUDING SCHEDULING TIME AND LOCATIONS FOR DELIVERIES, BUILDING ACCESS, USE OF BUILDING SERVICES AND FACILITIES, AND USE OF ELEVATORS. MINIMIZE DISTURBANCE OF BUILDING FUNCTIONS AND OCCUPANTS.
  5. OWNER WILL PROVIDE WORK NOTED 'BY OTHERS' OR 'NIC' UNDER SEPARATE CONTRACT. INCLUDE SCHEDULE REQUIREMENTS IN CONSTRUCTION PROGRESS SCHEDULE AND COORDINATE TO ASSURE ORDERLY SEQUENCE OF INSTALLATION.
  7. PROTECT AREA OF WORK AND ADJACENT AREAS FROM DAMAGE.
  8. MAINTAIN WORK AREAS SECURE AND LOCKABLE DURING CONSTRUCTION. COORDINATE WITH TENNANT AND LANDLORD TO ENSURE SECURITY.
  9. DO NOT SCALE DRAWINGS. WRITTEN DIMENSIONS GOVERN.
  10. UNDERCUT DOORS TO CLEAR TOP OF FLOOR FINISHES BY 6mm (1/4"), UNLESS OTHERWISE NOTED.

Revision			
No.	Date	Description	By

Quantity Surveyor

Structural Consultant

Mechanical & Electrical Consultant

Architect



architecture+interiors  
head office tel: 868 626 2837 fax: 868 626 3643  
fernandes business centre hq002 eastern main road  
laventille pos trinidad+tbago www.aclaworks.com

**for approval**  
Friday, May 12, 2017

Project Title

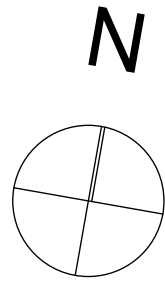
**Cascade Reconstitution Apartments**

Cascade Road Cascade  
#Site City  
Trinidad and Tobago

Drawing Title

**ground floor plan**

Scale	1:100
First Issue Date	09 July, 2014
Project number	2014-0005
Modelled by	J. Juman
drawing number	A:G/200
revision	



A-A  
A:G/300

11,880 [EXISTING]  
125 4,140 125 3,555 125 3,698 100 12  
125 1,155 1,830 1,155 610 2,135 810 225 690 1,525 1,258 100

CANOPY ABOVE

NEW METAL FRAMED FIXED WINDOW WITH GLASS AND SAFETY FILM

EXISTING BLOCK WALL, RE-PAINTED

NEW METAL FRAMED CASEMENT WINDOWS WITH GLASS AND SAFETY FILM

NEW METAL FRAMED FIXED WINDOW WITH GLASS AND SAFETY FILM

NEW KITCHEN COUNTER WITH CABINETS BELOW

NEW 100mm THK. CONC. BLOCK WALL WITH 12mm RENDER ON BOTH SIDES, PAINTED

NEW REINFORCED CONCRETE STAIRS WITH METAL HANDRAIL

NEW 100mm THK. CONC. BLOCK WALL WITH 12mm RENDER ON BOTH SIDES, PAINTED

NEW METAL FRAMED FIXED WINDOW WITH GLASS AND SAFETY FILM

EXISTING BLOCK WALL, RE-PAINTED

NEW METAL FRAMED FIXED WINDOW WITH GLASS AND SAFETY FILM

NEW 100mm THK. CONC. BLOCK WALL WITH 12mm RENDER ON BOTH SIDES, PAINTED

NEW METAL BI-FOLDING DOORS WITH GLASS AND SAFETY FILM

NEW 100mm THK. CONC. BLOCK LOW WALL WITH 12mm RENDER ON BOTH SIDES, PAINTED

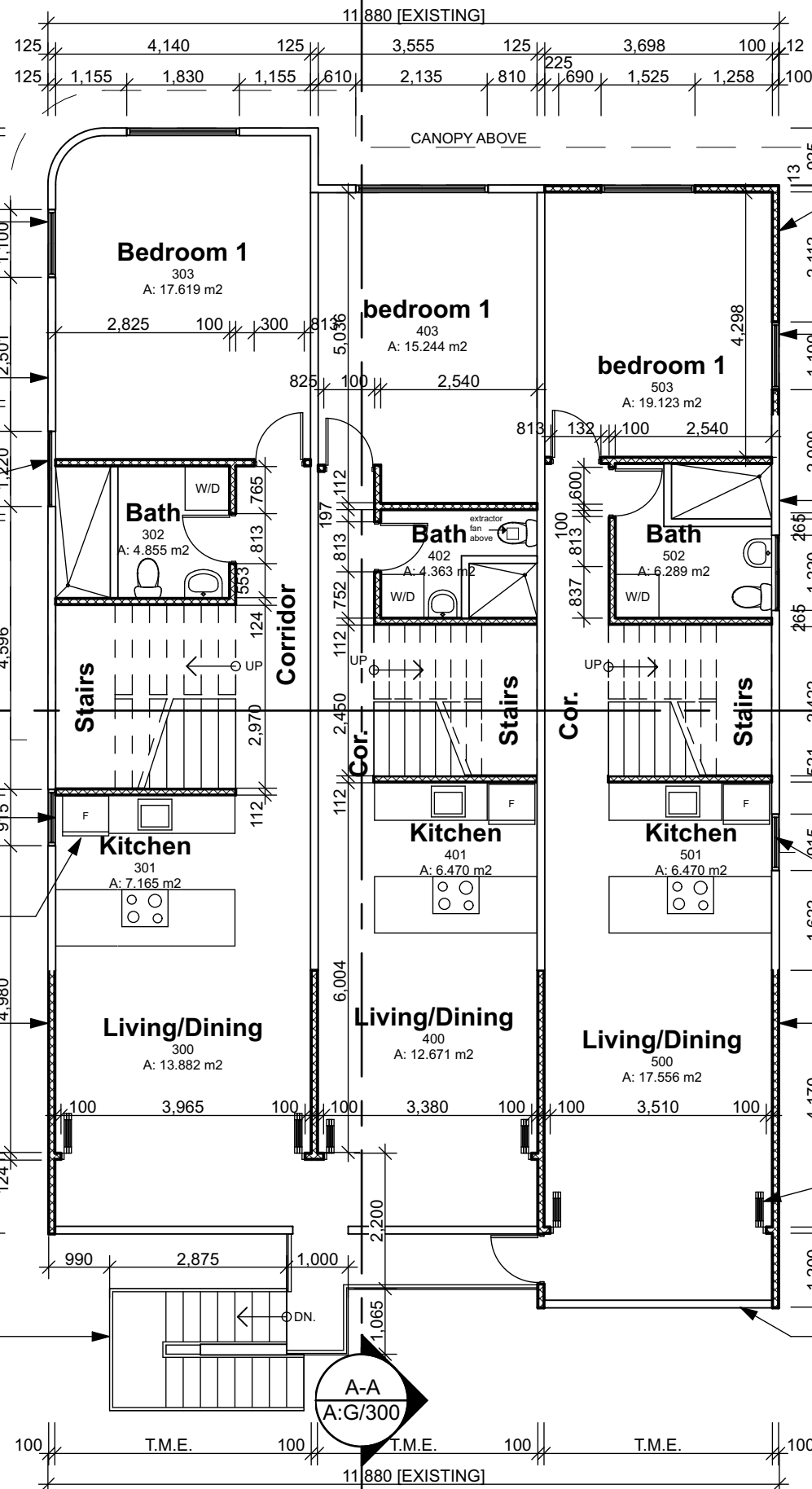
B-B  
A:G/300

B-B  
A:G/300

A-A  
A:G/300

# first floor plan

SCALE: 1:100



- General notes**
1. COMPLY WITH TOWN AND COUNTRY AS WELL AS REGIONAL CORPORATION CODES, RULES AND REGULATIONS GOVERNING THE WORK.
  2. REVIEW DOCUMENTS, VERIFY DIMENSIONS AND FIELD CONDITIONS AND CONFIRM THAT WORK IS BUILDABLE AS SHOWN. REPORT ANY CONFLICTS OR OMISSIONS TO THE ARCHITECT FOR CLARIFICATION PRIOR TO PERFORMING ANY WORK IN QUESTION.
  3. SUBMIT REQUEST FOR SUBMISSIONS, REVISIONS OR CHANGES TO ARCHITECT FOR REVIEW PRIOR TO PURCHASE, FABRICATION OR INSTALLATION.
  4. COORDINATE WORK WITH THE OWNER, INCLUDING SCHEDULING TIME AND LOCATIONS FOR DELIVERIES, BUILDING ACCESS, USE OF BUILDING SERVICES AND FACILITIES, AND USE OF ELEVATORS. MINIMIZE DISTURBANCE OF BUILDING FUNCTIONS AND OCCUPANTS.
  5. OWNER WILL PROVIDE WORK NOTED 'BY OTHERS' OR 'NIC' UNDER SEPARATE CONTRACT. INCLUDE SCHEDULE REQUIREMENTS IN CONSTRUCTION PROGRESS SCHEDULE AND COORDINATE TO ASSURE ORDERLY SEQUENCE OF INSTALLATION.
  7. PROTECT AREA OF WORK AND ADJACENT AREAS FROM DAMAGE.
  8. MAINTAIN WORK AREAS SECURE AND LOCKABLE DURING CONSTRUCTION. COORDINATE WITH TENNANT AND LANDLORD TO ENSURE SECURITY.
  9. DO NOT SCALE DRAWINGS. WRITTEN DIMENSIONS GOVERN.
  10. UNDERCUT DOORS TO CLEAR TOP OF FLOOR FINISHES BY 6mm (X), UNLESS OTHERWISE NOTED.

Revision			
No.	Date	Description	By

Quantity Surveyor

Structural Consultant

Mechanical & Electrical Consultant

Architect

architecture+interiors  
head office tel: 868 626 2837 fax: 868 626 3643  
fernandes business centre hq02 eastern main road  
laventille pos trinidad+tobago www.aclaworks.com

**for approval**  
Friday, May 12, 2017

Project Title

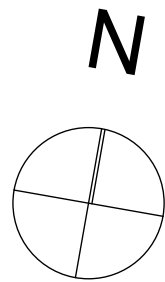
**Cascade Reconstitution Apartments**

Cascade Road Cascade  
#Site City  
Trinidad and Tobago

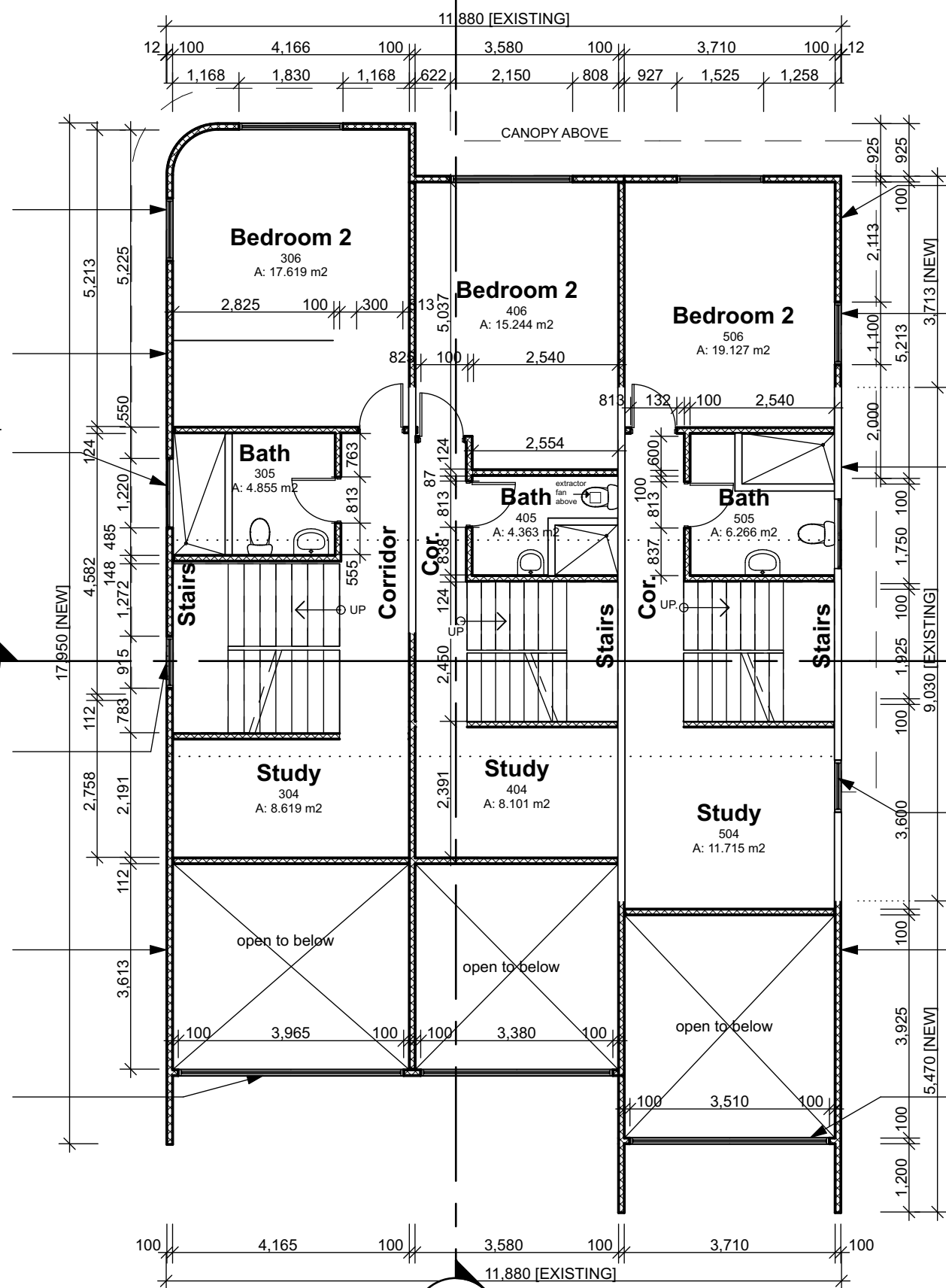
Drawing Title

**first floor plan**

Scale	1:100
First Issue Date	09 July, 2014
Project number	2014-0005
Modelled by	J. Juman
drawing number	<b>A:G/201</b>
revision	



A-A  
A:G/300



NEW METAL FRAMED FIXED WINDOW WITH GLASS AND SAFETY FILM

NEW 100mm THK. CONC. BLOCK WALL WITH 12mm RENDER ON BOTH SIDES, PAINTED

NEW METAL FRAMED CASEMENT WINDOWS WITH GLASS AND SAFETY FILM

NEW METAL FRAMED FIXED WINDOW WITH GLASS AND SAFETY FILM

NEW 100mm THK. CONC. BLOCK WALL WITH 12mm RENDER ON BOTH SIDES, PAINTED

NEW METAL FRAMED FIXED WINDOW WITH GLASS AND SAFETY FILM

NEW 100mm THK. CONC. BLOCK WALL WITH 12mm RENDER ON BOTH SIDES, PAINTED

NEW METAL FRAMED FIXED WINDOW WITH GLASS AND SAFETY FILM

EXISTING BLOCK WALL, RE-PAINTED

NEW METAL FRAMED FIXED WINDOW WITH GLASS AND SAFETY FILM

NEW 100mm THK. CONC. BLOCK WALL WITH 12mm RENDER ON BOTH SIDES, PAINTED

NEW METAL FRAMED FIXED WINDOW WITH GLASS AND SAFETY FILM

# second floor plan

SCALE: 1:100

A-A  
A:G/300

- General notes
1. COMPLY WITH TOWN AND COUNTRY AS WELL AS REGIONAL CORPORATION CODES, RULES AND REGULATIONS GOVERNING THE WORK.
  2. REVIEW DOCUMENTS, VERIFY DIMENSIONS AND FIELD CONDITIONS AND CONFIRM THAT WORK IS BUILDABLE AS SHOWN. REPORT ANY CONFLICTS OR OMISSIONS TO THE ARCHITECT FOR CLARIFICATION PRIOR TO PERFORMING ANY WORK IN QUESTION.
  3. SUBMIT REQUEST FOR SUBMISSIONS, REVISIONS OR CHANGES TO ARCHITECT FOR REVIEW PRIOR TO PURCHASE, FABRICATION OR INSTALLATION.
  4. COORDINATE WORK WITH THE OWNER, INCLUDING SCHEDULING TIME AND LOCATIONS FOR DELIVERIES, BUILDING ACCESS, USE OF BUILDING SERVICES AND FACILITIES, AND USE OF ELEVATORS. MINIMIZE DISTURBANCE OF BUILDING FUNCTIONS AND OCCUPANTS.
  5. OWNER WILL PROVIDE WORK NOTED 'BY OTHERS' OR 'NIC' UNDER SEPARATE CONTRACT. INCLUDE SCHEDULE REQUIREMENTS IN CONSTRUCTION PROGRESS SCHEDULE AND COORDINATE TO ASSURE ORDERLY SEQUENCE OF INSTALLATION.
  7. PROTECT AREA OF WORK AND ADJACENT AREAS FROM DAMAGE.
  8. MAINTAIN WORK AREAS SECURE AND LOCKABLE DURING CONSTRUCTION. COORDINATE WITH TENNANT AND LANDLORD TO ENSURE SECURITY.
  9. DO NOT SCALE DRAWINGS. WRITTEN DIMENSIONS GOVERN.
  10. UNDERCUT DOORS TO CLEAR TOP OF FLOOR FINISHES BY 6mm (X), UNLESS OTHERWISE NOTED.

Revision			
No.	Date	Description	By

Quantity Surveyor

Structural Consultant

Mechanical & Electrical Consultant

Architect

architecture+interiors  
head office tel: 868 626 2837 fax: 868 626 3643  
fernandes business centre hq02 eastern main road  
laventille pos trinidad+tbago www.aclaworks.com

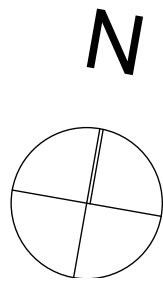
**for approval**  
Friday, May 12, 2017

Project Title  
**Cascade Reconstitution Apartments**

Cascade Road Cascade  
#Site City  
Trinidad and Tobago

Drawing Title  
**second floor plan**

Scale	1:100
First Issue Date	09 July, 2014
Project number	2014-0005
Modelled by	J. Juman
drawing number	<b>A:G/202</b>
revision	



NEW 100mm Ø PVC DOWNPIPE

NEW REINF. CONCRETE CANOPY, PAINTED

NEW 305mm WIDE CONC. BOX DRAIN

NEW 100mm THK. CONC. BLOCK PARAPET WALL w/ 12mm RENDER ON BOTH SIDES, PAINTED

LINE OF NEW CORRUGATED METAL ROOF ABOVE

NEW 125mm THK. REINF. CONC. SLAB w/ SCREED TO DRAIN AND ASPHALTIC MEMBRANE

NEW 100mm Ø PVC DOWNPIPE

NEW REINF. CONCRETE CANOPY, PAINTED

NEW 125mm THK. REINF. CONC. SLAB w/ SCREED TO DRAIN AND ASPHALTIC MEMBRANE

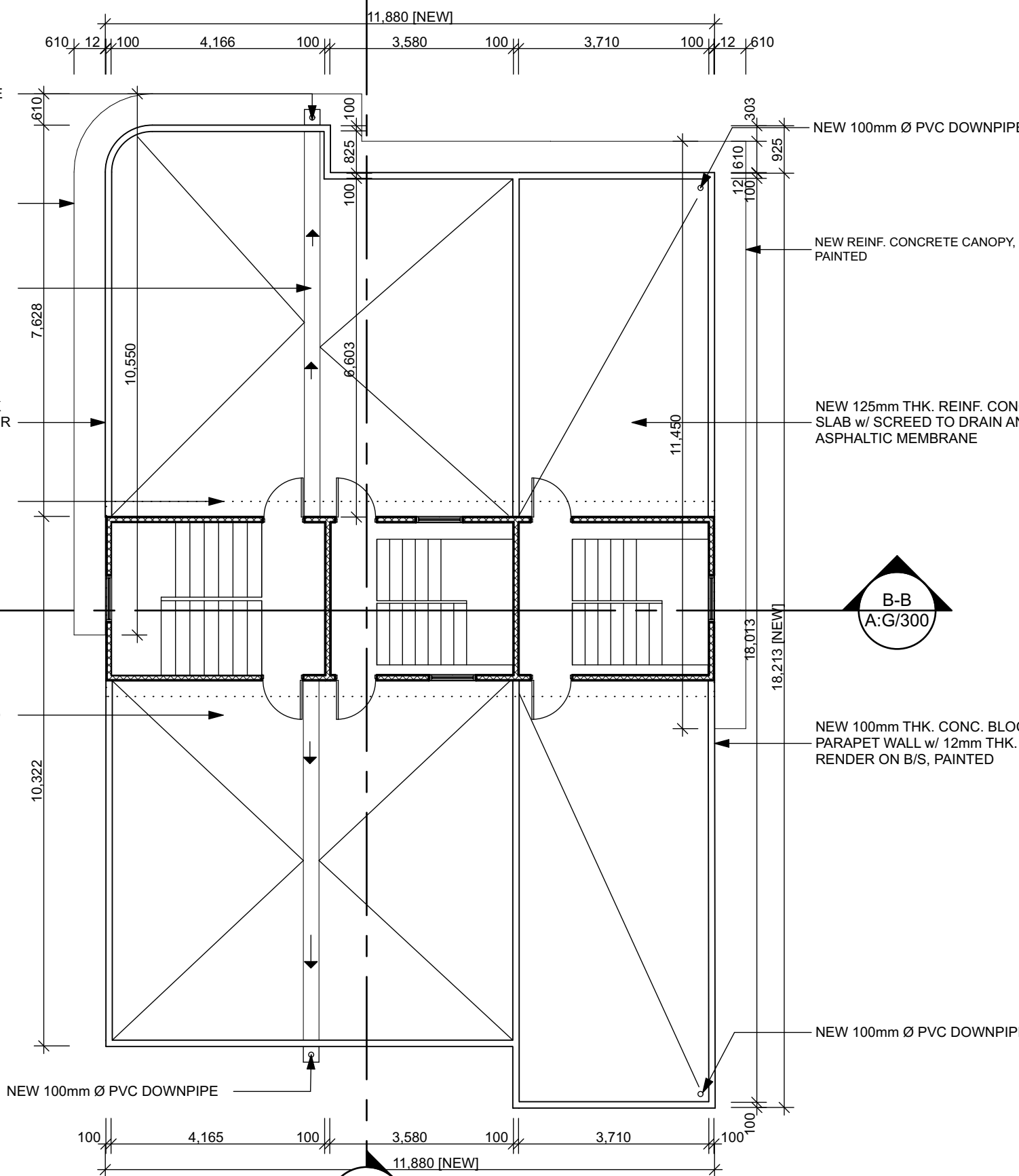
NEW 100mm THK. CONC. BLOCK PARAPET WALL w/ 12mm THK. RENDER ON B/S, PAINTED

NEW 100mm Ø PVC DOWNPIPE

NEW 100mm Ø PVC DOWNPIPE

# roof level

SCALE: 1:100



- General notes**
1. COMPLY WITH TOWN AND COUNTRY AS WELL AS REGIONAL CORPORATION CODES, RULES AND REGULATIONS GOVERNING THE WORK.
  2. REVIEW DOCUMENTS, VERIFY DIMENSIONS AND FIELD CONDITIONS AND CONFIRM THAT WORK IS BUILDABLE AS SHOWN. REPORT ANY CONFLICTS OR OMISSIONS TO THE ARCHITECT FOR CLARIFICATION PRIOR TO PERFORMING ANY WORK IN QUESTION.
  3. SUBMIT REQUEST FOR SUBMISSIONS, REVISIONS OR CHANGES TO ARCHITECT FOR REVIEW PRIOR TO PURCHASE, FABRICATION OR INSTALLATION.
  4. COORDINATE WORK WITH THE OWNER, INCLUDING SCHEDULING TIME AND LOCATIONS FOR DELIVERIES, BUILDING ACCESS, USE OF BUILDING SERVICES AND FACILITIES, AND USE OF ELEVATORS. MINIMIZE DISTURBANCE OF BUILDING FUNCTIONS AND OCCUPANTS.
  5. OWNER WILL PROVIDE WORK NOTED 'BY OTHERS' OR 'NIC' UNDER SEPARATE CONTRACT. INCLUDE SCHEDULE REQUIREMENTS IN CONSTRUCTION PROGRESS SCHEDULE AND COORDINATE TO ASSURE ORDERLY SEQUENCE OF INSTALLATION.
  7. PROTECT AREA OF WORK AND ADJACENT AREAS FROM DAMAGE.
  8. MAINTAIN WORK AREAS SECURE AND LOCKABLE DURING CONSTRUCTION. COORDINATE WITH TENNANT AND LANDLORD TO ENSURE SECURITY.
  9. DO NOT SCALE DRAWINGS. WRITTEN DIMENSIONS GOVERN.
  10. UNDERCUT DOORS TO CLEAR TOP OF FLOOR FINISHES BY 6mm (X), UNLESS OTHERWISE NOTED.

Revision			
No.	Date	Description	By

Quantity Surveyor

Structural Consultant

Mechanical & Electrical Consultant

Architect

architecture+interiors  
 head office tel: 868 626 2837 fax: 868 626 3643  
 fernandes business centre hq002 eastern main road  
 laventille pos trinidad+tbago www.aclaworks.com

**for approval**  
 Friday, May 12, 2017

Project Title

**Cascade Reconstitution Apartments**

Cascade Road Cascade  
 #Site City  
 Trinidad and Tobago

Drawing Title

**roof plan**

Scale	1:100
First Issue Date	09 July, 2014
Project number	2014-0005
Modelled by	J. Juman

drawing number **A:G/203** revision



NEW CORRUGATED METAL ROOF ON 610mm X 1220mm TIMBER RAFTERS W/ 5% SLOPE

NEW 100mm THK. CONC. BLOCK PARAPET WALL w/ 12mm RENDER ON BOTH SIDES, PAINTED

NEW METAL FRAMED FIXED WINDOW WITH GLASS AND SAFETY FILM

NEW WOODEN FLOOR BOARDS ON HARDWOOD JOISTS

NEW METAL FRAMED FIXED WINDOW WITH GLASS AND SAFETY FILM

EXISTING BLOCK WALL, RE-PAINTED

NEW GYPSUM CEILING, PAINTED

EXISTING REINF. CONC. FLOOR SLAB

NEW 100mm THK. CONC. BLOCK WALL w/ 12mm RENDER ON BOTH SIDES, PAINTED

NEW 125mm THK. REINF. CONC. SLAB w/ SCREED TO DRAIN AND ASPHALTIC MEMBRANE

NEW METAL FRAMED FIXED WINDOW WITH GLASS AND SAFETY FILM

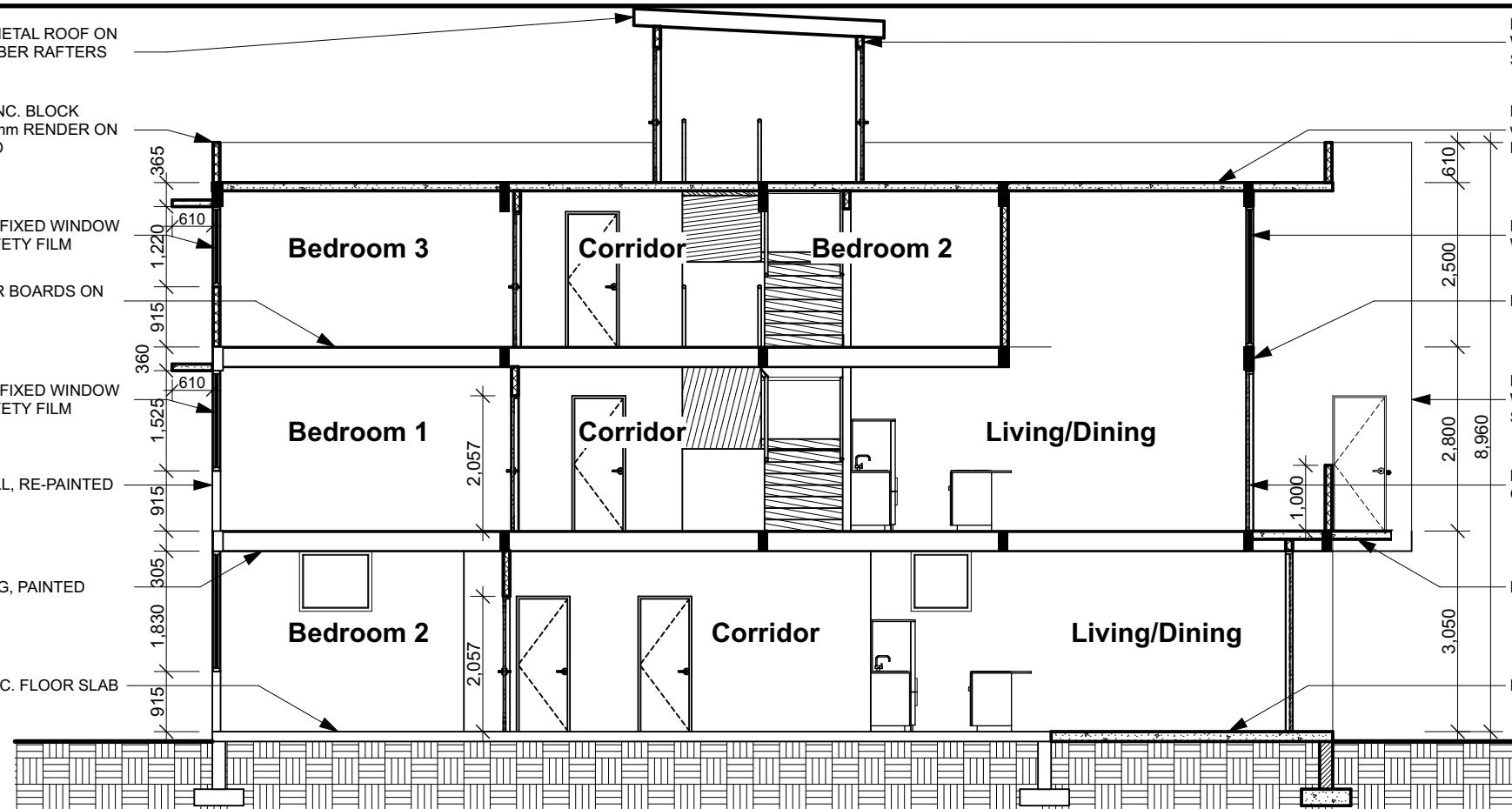
NEW REINF. CONC. BEAM

NEW 100mm THK. CONC. BLOCK WALL w/ 12mm RENDER ON BOTH SIDES, PAINTED

NEW METAL BI-FOLDING DOORS WITH GLASS AND SAFETY FILM

NEW REINF. CONC. FLOOR SLAB

NEW REINF. CONC. FLOOR SLAB



### building section A-A

SCALE: 1:100

NEW 100mm THK. CONC. BLOCK WALL w/ 12mm RENDER ON BOTH SIDES, PAINTED

NEW METAL FRAMED FIXED WINDOW WITH GLASS AND SAFETY FILM

NEW WOODEN FLOOR BOARDS ON HARDWOOD JOISTS

NEW REINF. CONCRETE CANOPY, PAINTED

EXISTING BLOCK WALL, RE-PAINTED

NEW GYPSUM CEILING, PAINTED

EXISTING REINF. CONC. FLOOR SLAB

NEW CORRUGATED METAL ROOF ON 610mm X 1220mm TIMBER RAFTERS W/ 5% SLOPE

NEW 125mm THK. REINF. CONC. SLAB w/ SCREED TO DRAIN AND ASPHALTIC MEMBRANE

NEW REINF. CONC. BEAM

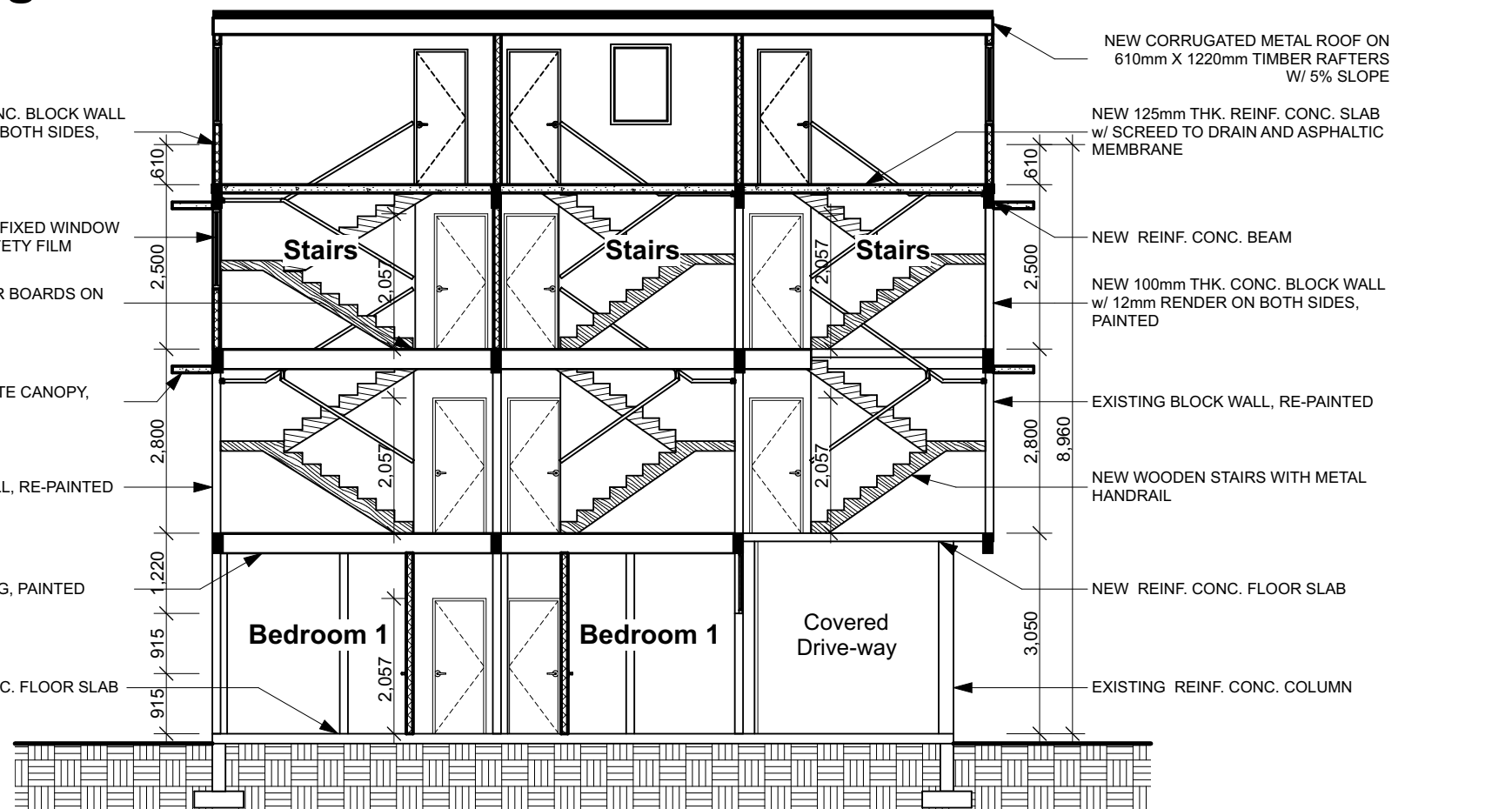
NEW 100mm THK. CONC. BLOCK WALL w/ 12mm RENDER ON BOTH SIDES, PAINTED

EXISTING BLOCK WALL, RE-PAINTED

NEW WOODEN STAIRS WITH METAL HANDRAIL

NEW REINF. CONC. FLOOR SLAB

EXISTING REINF. CONC. COLUMN



### building section B-B

SCALE: 1:100

- General notes**
1. COMPLY WITH TOWN AND COUNTRY AS WELL AS REGIONAL CORPORATION CODES, RULES AND REGULATIONS GOVERNING THE WORK.
  2. REVIEW DOCUMENTS, VERIFY DIMENSIONS AND FIELD CONDITIONS AND CONFIRM THAT WORK IS BUILDABLE AS SHOWN. REPORT ANY CONFLICTS OR OMISSIONS TO THE ARCHITECT FOR CLARIFICATION PRIOR TO PERFORMING ANY WORK IN QUESTION.
  3. SUBMIT REQUEST FOR SUBMISSIONS, REVISIONS OR CHANGES TO ARCHITECT FOR REVIEW PRIOR TO PURCHASE, FABRICATION OR INSTALLATION.
  4. COORDINATE WORK WITH THE OWNER, INCLUDING SCHEDULING TIME AND LOCATIONS FOR DELIVERIES, BUILDING ACCESS, USE OF BUILDING SERVICES AND FACILITIES, AND USE OF ELEVATORS. MINIMIZE DISTURBANCE OF BUILDING FUNCTIONS AND OCCUPANTS.
  5. OWNER WILL PROVIDE WORK NOTED 'BY OTHERS' OR 'NIC' UNDER SEPARATE CONTRACT. INCLUDE SCHEDULE REQUIREMENTS IN CONSTRUCTION PROGRESS SCHEDULE AND COORDINATE TO ASSURE ORDERLY SEQUENCE OF INSTALLATION.
  7. PROTECT AREA OF WORK AND ADJACENT AREAS FROM DAMAGE.
  8. MAINTAIN WORK AREAS SECURE AND LOCKABLE DURING CONSTRUCTION. COORDINATE WITH TENANT AND LANDLORD TO ENSURE SECURITY.
  9. DO NOT SCALE DRAWINGS. WRITTEN DIMENSIONS GOVERN.
  10. UNDERCUT DOORS TO CLEAR TOP OF FLOOR FINISHES BY 6mm (1/4"), UNLESS OTHERWISE NOTED.


No.	Date	Description	By

Quantity Surveyor

Structural Consultant

Mechanical & Electrical Consultant

Architect



architecture+interiors  
 head office tel: 868 626 2837 fax: 868 626 3643  
 fernandes business centre hq02 eastern main road  
 laventille pos trinidad+tbago www.aclaworks.com

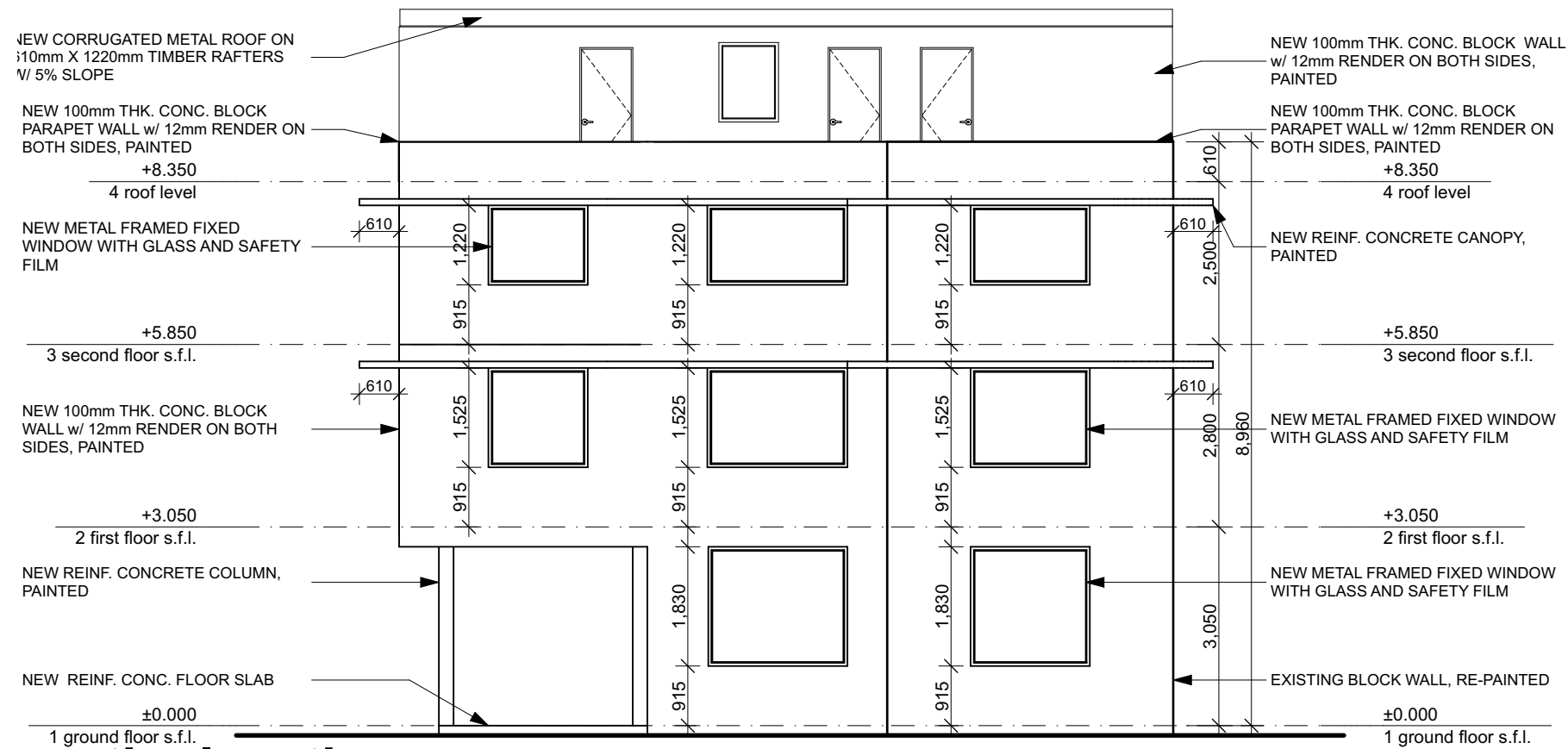
**for approval**  
 Friday, May 12, 2017

Project Title  
**Cascade Reconstitution Apartments**

Cascade Road Cascade  
 #Site City  
 Trinidad and Tobago

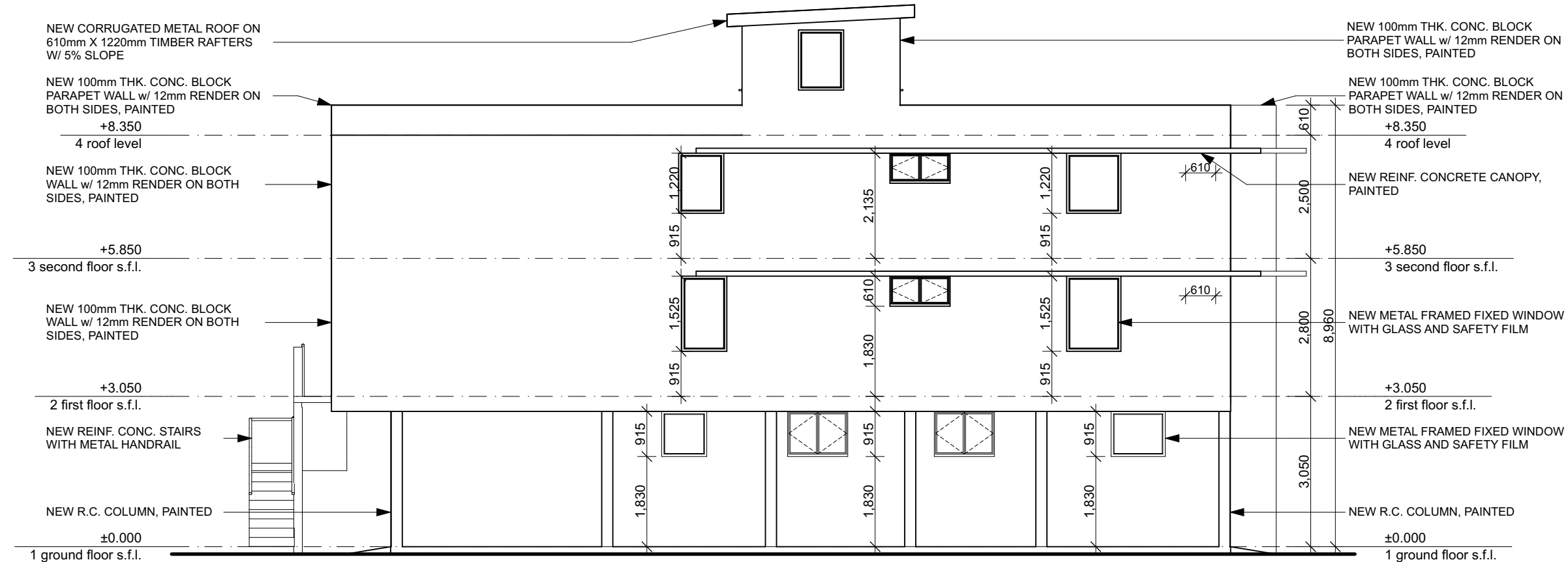
Drawing Title  
**building section A-A + B-B**

Scale	1:100
First Issue Date	09 July, 2014
Project number	2014-0005
Modelled by	J. Juman
drawing number	<b>A:G/300</b>
revision	



# north elevation

SCALE: 1:100



# east elevation

SCALE: 1:100

- General notes**
1. COMPLY WITH TOWN AND COUNTRY AS WELL AS REGIONAL CORPORATION CODES, RULES AND REGULATIONS GOVERNING THE WORK.
  2. REVIEW DOCUMENTS, VERIFY DIMENSIONS AND FIELD CONDITIONS AND CONFIRM THAT WORK IS BUILDABLE AS SHOWN. REPORT ANY CONFLICTS OR OMISSIONS TO THE ARCHITECT FOR CLARIFICATION PRIOR TO PERFORMING ANY WORK IN QUESTION.
  3. SUBMIT REQUEST FOR SUBMISSIONS, REVISIONS OR CHANGES TO ARCHITECT FOR REVIEW PRIOR TO PURCHASE, FABRICATION OR INSTALLATION.
  4. COORDINATE WORK WITH THE OWNER, INCLUDING SCHEDULING TIME AND LOCATIONS FOR DELIVERIES, BUILDING ACCESS, USE OF BUILDING SERVICES AND FACILITIES, AND USE OF ELEVATORS. MINIMIZE DISTURBANCE OF BUILDING FUNCTIONS AND OCCUPANTS.
  5. OWNER WILL PROVIDE WORK NOTED 'BY OTHERS' OR 'NIC' UNDER SEPARATE CONTRACT. INCLUDE SCHEDULE REQUIREMENTS IN CONSTRUCTION PROGRESS SCHEDULE AND COORDINATE TO ASSURE ORDERLY SEQUENCE OF INSTALLATION.
  7. PROTECT AREA OF WORK AND ADJACENT AREAS FROM DAMAGE.
  8. MAINTAIN WORK AREAS SECURE AND LOCKABLE DURING CONSTRUCTION. COORDINATE WITH TENANT AND LANDLORD TO ENSURE SECURITY.
  9. DO NOT SCALE DRAWINGS. WRITTEN DIMENSIONS GOVERN.
  10. UNDERCUT DOORS TO CLEAR TOP OF FLOOR FINISHES BY 6mm (1/4"), UNLESS OTHERWISE NOTED.

Revision			
No.	Date	Description	By

Quantity Surveyor

Structural Consultant

Mechanical & Electrical Consultant

Architect



architecture+interiors  
 head office tel: 868 626 2837 fax: 868 626 3643  
 fernandes business centre hq02 eastern main road  
 laventille pos trinidad+tbago www.aclaworks.com

**for approval**  
 Friday, May 12, 2017

Project Title

**Cascade Reconstitution Apartments**

Cascade Road Cascade  
 #Site City  
 Trinidad and Tobago

Drawing Title

**north and east building elevations**

Scale	1:100
First Issue Date	09 July, 2014
Project number	2014-0005
Modelled by	J. Juman
drawing number	<b>A:G/400</b>
revision	

NEW CORRUGATED METAL ROOF ON 610mm X 1220mm TIMBER RAFTERS W/ 5% SLOPE

NEW 100mm THK. CONC. BLOCK PARAPET WALL w/ 12mm RENDER ON BOTH SIDES, PAINTED

+8.350  
4 roof level

NEW METAL FRAMED FIXED WINDOW WITH GLASS AND SAFETY FILM

+5.850  
3 second floor s.f.l.

NEW 100mm THK. CONC. BLOCK WALL w/ 12mm RENDER ON BOTH SIDES, PAINTED

+3.050  
2 first floor s.f.l.

NEW METAL BI-FOLDING DOORS WITH GLASS AND SAFETY FILM

NEW REINF. CONC. STAIRS WITH METAL HANDRAIL

±0.000  
1 ground floor s.f.l.

NEW 100mm THK. CONC. BLOCK WALL w/ 12mm RENDER ON BOTH SIDES, PAINTED

NEW 100mm THK. CONC. BLOCK PARAPET WALL w/ 12mm RENDER ON BOTH SIDES, PAINTED

+8.350  
4 roof level

NEW 100mm THK. CONC. BLOCK WALL w/ 12mm RENDER ON BOTH SIDES, PAINTED

+5.850  
3 second floor s.f.l.

NEW METAL BI-FOLDING DOORS WITH GLASS AND SAFETY FILM

+3.050  
2 first floor s.f.l.

NEW 100mm THK. CONC. BLOCK WALL w/ 12mm RENDER ON BOTH SIDES, PAINTED

NEW R.C. COLUMN, PAINTED

±0.000  
1 ground floor s.f.l.

# south elevation

SCALE: 1:100

NEW CORRUGATED METAL ROOF ON 610mm X 1220mm TIMBER RAFTERS W/ 5% SLOPE

NEW 100mm THK. CONC. BLOCK PARAPET WALL w/ 12mm RENDER ON BOTH SIDES, PAINTED

+8.350  
4 roof level

NEW REINF. CONCRETE CANOPY, PAINTED

+5.850  
3 second floor s.f.l.

NEW MTL. FRAMED FIXED WINDOW WITH GLASS AND SAFETY FILM

+3.050  
2 first floor s.f.l.

NEW METAL FRAMED CASEMENT WINDOWS WITH GLASS AND SAFETY FILM

EXISTING BLOCK WALL, RE-PAINTED

±0.000  
1 ground floor s.f.l.

NEW 100mm THK. CONC. BLOCK WALL w/ 12mm RENDER ON BOTH SIDES, PAINTED

NEW 100mm THK. CONC. BLOCK PARAPET WALL w/ 12mm RENDER ON BOTH SIDES, PAINTED

+8.350  
4 roof level

NEW 100mm THK. CONC. BLOCK WALL w/ 12mm RENDER ON BOTH SIDES, PAINTED

+5.850  
3 second floor s.f.l.

NEW 100mm THK. CONC. BLOCK WALL w/ 12mm RENDER ON BOTH SIDES, PAINTED

+3.050  
2 first floor s.f.l.

NEW REINF. CONC. STAIRS WITH METAL HANDRAIL

NEW METAL FRAMED FIXED WINDOW WITH GLASS AND SAFETY FILM

±0.000  
1 ground floor s.f.l.

# west elevation

SCALE: 1:100

- General notes**
1. COMPLY WITH TOWN AND COUNTRY AS WELL AS REGIONAL CORPORATION CODES, RULES AND REGULATIONS GOVERNING THE WORK.
  2. REVIEW DOCUMENTS, VERIFY DIMENSIONS AND FIELD CONDITIONS AND CONFIRM THAT WORK IS BUILDABLE AS SHOWN. REPORT ANY CONFLICTS OR OMISSIONS TO THE ARCHITECT FOR CLARIFICATION PRIOR TO PERFORMING ANY WORK IN QUESTION.
  3. SUBMIT REQUEST FOR SUBMISSIONS, REVISIONS OR CHANGES TO ARCHITECT FOR REVIEW PRIOR TO PURCHASE, FABRICATION OR INSTALLATION.
  4. COORDINATE WORK WITH THE OWNER, INCLUDING SCHEDULING TIME AND LOCATIONS FOR DELIVERIES, BUILDING ACCESS, USE OF BUILDING SERVICES AND FACILITIES, AND USE OF ELEVATORS. MINIMIZE DISTURBANCE OF BUILDING FUNCTIONS AND OCCUPANTS.
  5. OWNER WILL PROVIDE WORK NOTED "BY OTHERS" OR "NIC" UNDER SEPARATE CONTRACT. INCLUDE SCHEDULE REQUIREMENTS IN CONSTRUCTION PROGRESS SCHEDULE AND COORDINATE TO ASSURE ORDERLY SEQUENCE OF INSTALLATION.
  7. PROTECT AREA OF WORK AND ADJACENT AREAS FROM DAMAGE.
  8. MAINTAIN WORK AREAS SECURE AND LOCKABLE DURING CONSTRUCTION. COORDINATE WITH TENNANT AND LANDLORD TO ENSURE SECURITY.
  9. DO NOT SCALE DRAWINGS. WRITTEN DIMENSIONS GOVERN.
  10. UNDERCUT DOORS TO CLEAR TOP OF FLOOR FINISHES BY 6mm (1/4"), UNLESS OTHERWISE NOTED.

Revision			
No.	Date	Description	By

Quantity Surveyor

Structural Consultant

Mechanical & Electrical Consultant

Architect

**W**  
acla-works

architecture+interiors  
head office tel: 868 626 2837 fax: 868 626 3643  
fernandes business centre hq02 eastern main road  
laventille pos trinidad+tbago www.aclaworks.com

**for approval**  
Friday, May 12, 2017

Project Title

**Cascade Reconstitution Apartments**

Cascade Road Cascade  
#Site City  
Trinidad and Tobago

Drawing Title

**south and west building elevations**

Scale	1:100
First Issue Date	09 July, 2014
Project number	2014-0005
Modelled by	J. Juman
drawing number	<b>A:G/401</b>
revision	